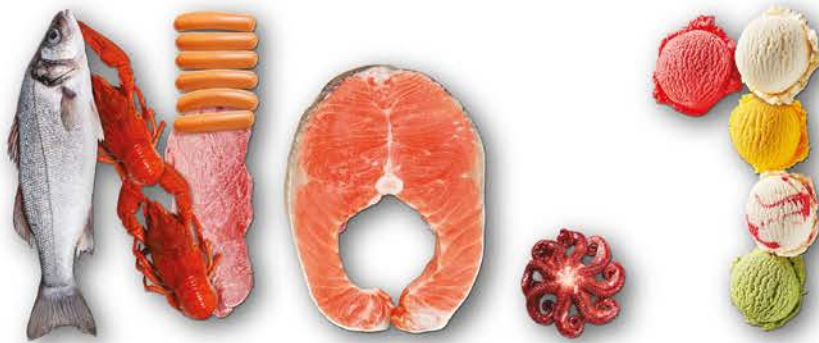
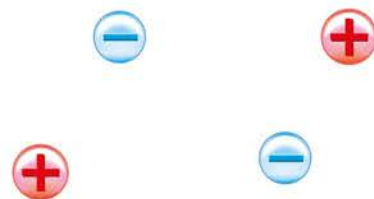


**SHARP**



in Refrigerator



When you are looking for a refrigerator, make it Sharp.  
 With the widest range of refrigerators available, Sharp has one to suit every need.  
 Each is equipped with revolutionary technology to keep food fresh and free from contamination, and to reduce energy consumption and help you save on electricity bills.  
 That's why Sharp is your Number 1 choice in refrigerators.



### Plasmacluster Ion Technology

- Keeps Food Free From Contamination
- Eliminates 99% Airborne Bacteria and 97% Airborne Mold



### AGCU Nano Deodoriser

- Help Reduce Odours

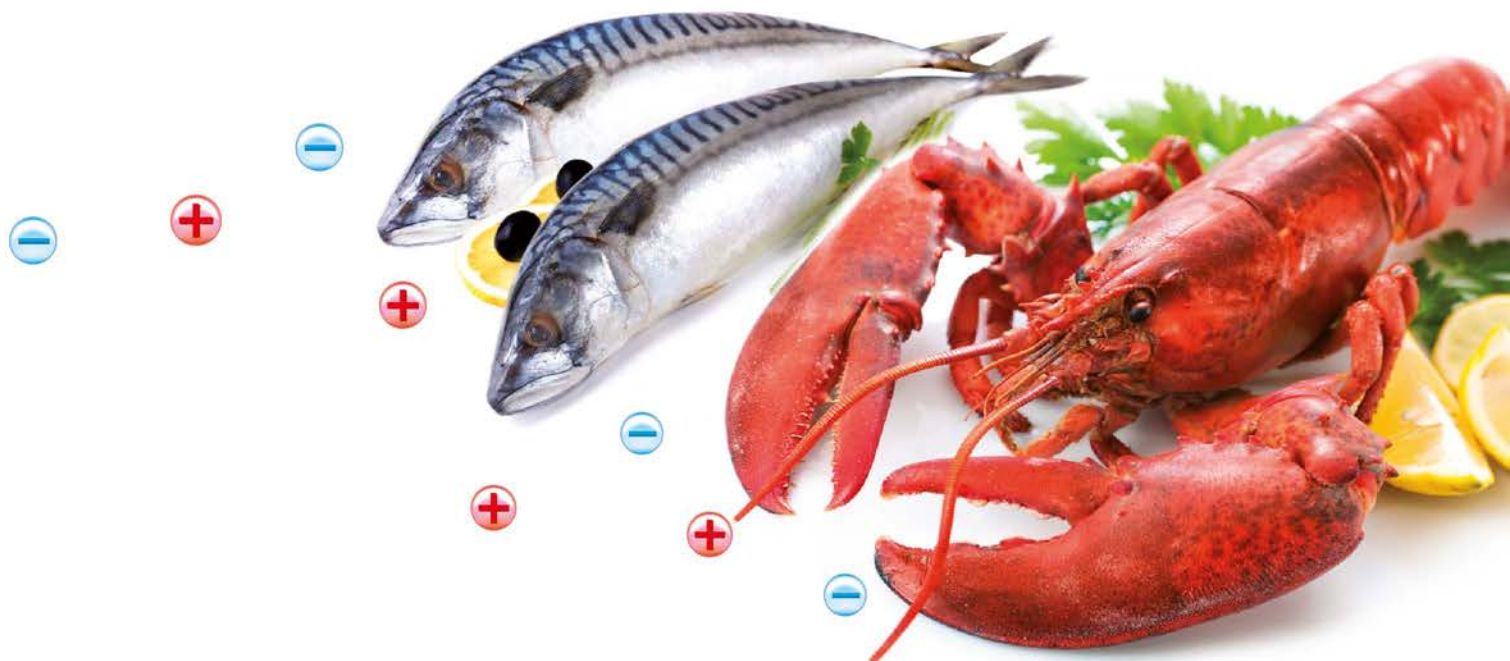


### J-Tech Inverter

- Saves Energy, Saves Cost
- Optimising Cooling Efficiency, Preserve Freshness







## HYBRID COOLING SYSTEM



### Hybrid Cooling Technology

- Even and Fast Cooling
- Maintain Healthy Moisture Level and Prevents Dryness

### 7 Shields Protection

- Complete Safety Protection For Your Refrigerator

### Wide Range of Line Up

- Meets Individual Needs





# Plasmacluster Ion Technology



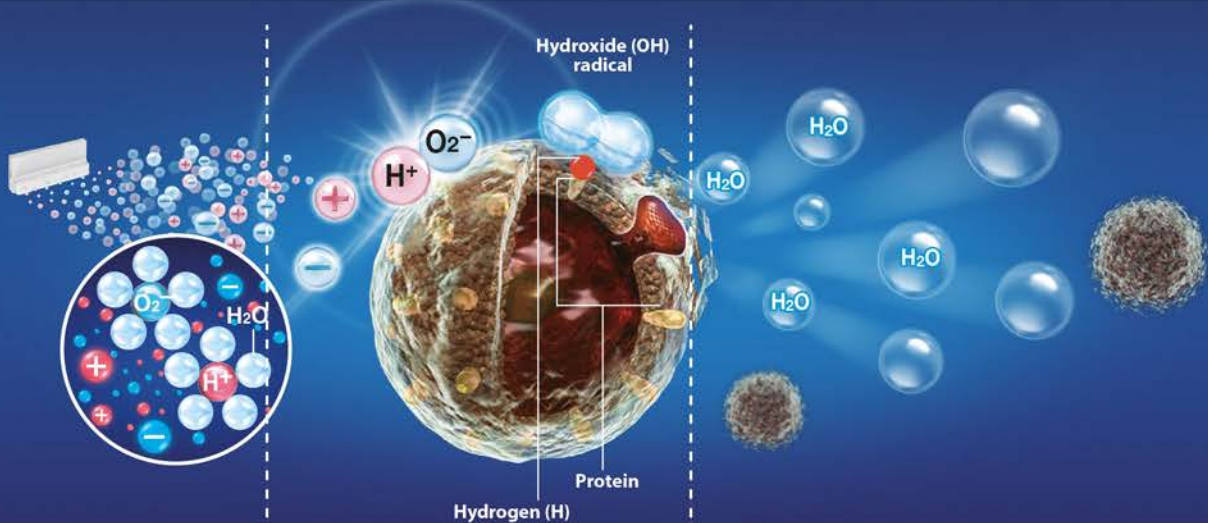
## Keeps Food Free From Contamination

As your refrigerator is frequently opened and closed, your foodstuffs are exposed to contaminants. Therefore, Plasmacluster Ion Technology eliminates contaminants like bacteria and mold by releasing positive and negative ions in the refrigerator to keep your food free from microbes and stay fresh longer.



### How does Plasmacluster Mechanism Removes Microbes

The ions are long-lasting\* because they are surrounded by water molecules.



#### 1 Ions are released.

Plasmacluster ions are generated by plasma discharge and released into the air.

#### 2 The ions act on airborne Bacteria and Mold.

The ions from hydroxide (OH) radicals are highly oxidising when they adhere to the surfaces of mold and bacteria. They instantly remove the hydrogen from the protein's surface breaking them down.

#### 3 The broken-down components return to the air as water.

The hydroxide (OH) radicals combine with hydrogen (H) to form water (H<sub>2</sub>O), which returns to the air.

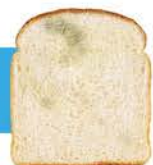
\*Verified in Sharp test comparisons of ions not surrounded by water molecules.

Test results from Sharp Corporation Japan. It shows Plasmacluster Ions inhibits the growth of mold on food, compared to food stored without Plasmacluster Ions.

Without Plasmacluster



Plasmacluster

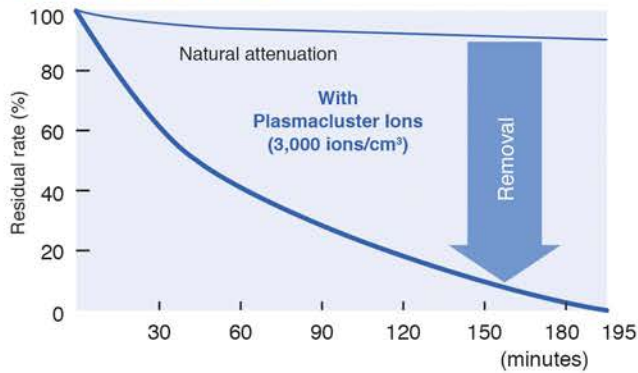




## Removal of Mold\*\*



### Reduction Of Airborne Mold

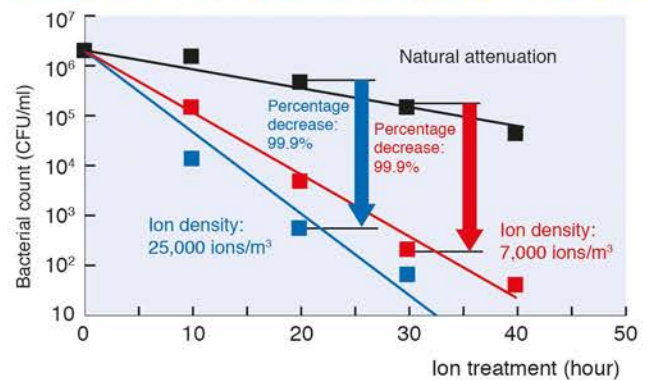


\*\*Tested by Ishikawa Health Services Association

## Removal of Bacteria\*\*\*



### Change Over Time In Bacterial Count Of Airborne MRSA



\*\*\*Tested by Kitasato Institute Medical Centre Hospital, Research Division



## AG CU Nano Deodoriser

### Help Reduce Odours

AG CU Nano Deodoriser is placed at the refrigerator compartment to reduce both bacteria and odours. When air passes through the filter, the molecules that create smells are oxidised and broken down.



## The Effectiveness Of Plasmacluster Ion Technology and AG CU\*\*\*\*

Plasmacluster Ion Technology, eliminates harmful bacteria like E.Coli, Micrococcus Luteus, Micrococcus Roseus, Enterococcus Faecalis and Mold that cause food poisoning.

### ELIMINATES HARMFUL BACTERIA



E. Coli



Enterococcus  
Faecalis



Micrococcus  
Luteus



Mold



Micrococcus  
Roseus

\*\*\*\*Research conducted by University of Applied Sciences Aachen, Germany, Kitasato Research Center of Environmental Sciences, Japan and Ishikawa Health Service Association, Japan.

# J-TECH INVERTER

Gradual Steps Consume Least Amount Of Energy And Saves Cost

**36**  
GRADUAL  
STEPS

**J-TECH INVERTER**  
**SHARP**

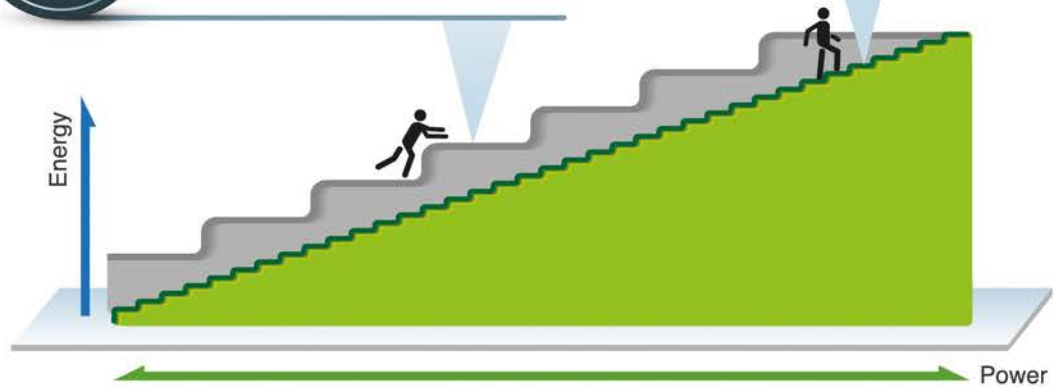
**J-Tech with 36 Gradual Steps**  
The **smaller** cooling range from one point to another uses less energy and saves cost.

**7**  
STEP  
STEPS

**Conventional Inverter**

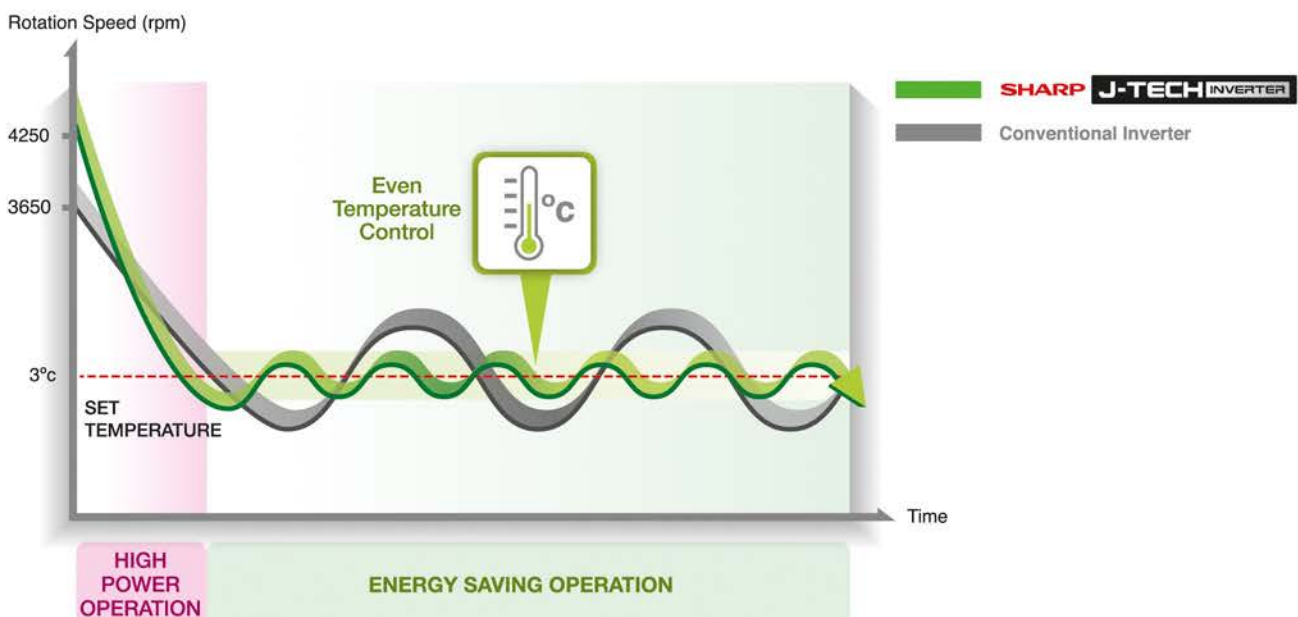
**Conventional with 7 Wide Steps**

The **wider** cooling range uses more energy to go from one point to another, this increases cost.



## Comparison Between J-Tech Inverter And Conventional Inverter

The set temperature for J-Tech Inverter refrigerator does not go very high or drop to very low. It keeps the temperature fluctuation to a minimal point. Whereas for the conventional inverter, the set temperature goes very high and very low consuming more energy compared to J-Tech Inverter which minimises electricity consumption.





## Optimising Cooling Efficiency Preserves Freshness While Saving Energy

### HIGH & LOW ROTATION



#### Cools Food In A Quickest Time, Saves Energy And Preserves Freshness

J-Tech Inverter's high rotation speed of 4250rpm cools food in the shortest period of time while saving energy. Whereas, conventional inverter with 3250rpm takes a longer time to cool and consumes more energy.

### LOW ROTATION



#### Goes On Low Rotation Speed When Refrigerator Is Less Frequently Used

J-Tech Inverter saves energy by maintaining low rotation speed of 1200rpm (without affecting your food freshness) when the refrigerator is least used. Conventional inverter goes on slightly higher rotation speed of 1300rpm compared to J-Tech. It uses more energy when the refrigerator is idle.

### LOW NOISE & VIBRATION



#### Quiet Operation

This feature reduces operational noise by 50%\* (2.9dB) and vibration by 30%\* compared to conventional models.

\*Based on Sharp's Internal Test

# HYBRID

## COOLING SYSTEM

### Maintains Healthy Moisture Level and Prevent Dryness



Hybrid Cooling Technology, cools the air that travels from refrigerator's compressor through its Hybrid Cooling panel. The aluminium panel inside is cooled to approximately 0°C which cools the air faster and radiates the cool air evenly to every compartment of the refrigerator.

It also turns water molecules that get into the refrigerator to moisture, preventing food dryness.

Food Spoils Faster  
With Conventional  
Cooling Technology

Food Remains Fresh  
With Hybrid  
Cooling Technology



## 7 Shields Protection

### Complete Safety Protection For Your Refrigerator



#### Lightning

Power board is protected from power surge with varistors.



#### Stability

Sturdy base tested to 10 degrees tilt.



#### Insulation

High safety compliance design protects users from electric shock.



#### Fire

Power board is enclosed by fire-retardant material.



#### Voltage

Stable operation in wide voltage range (99-264V).



#### Vibration

Ensures the quality of the refrigerator will not be affected by even the roughest handling during delivery.



#### Rat

Anti-rat protection on electrical wires.





Luxury  
Beyond Imagination...



## CONTEMPORARY FEATURES



Flexi Room



Touch Control  
Door Panel



"Karakuri"  
Water Dispenser



9-Way  
Flexible Shelf



Auto  
Crystal CLEAR  
Ice Cube Maker



J-TECH INVERTER

ActiFresh HYBRID





## Innovative Features



### Flexi Room

#### Preset Temperature Settings

Flexi Room's Preset Temperature mode allows you to select any of its four settings that suit your food items. Each of these settings will return to your previously set default temperature settings after a period of time.



#### Cool Down Mode



Flexi Room, amazingly cools down your warm food items (< 60°C) without affecting the overall refrigerator's temperature. Suitable for food items that are good to serve cool, like desserts.



#### Defrost Mode



Flexi Room defrosts your frozen items for all your cooking convenience.



#### Extra Cool Mode



It also chills your carbonated can drinks at 0°C in a fastest period of time. The bubbles in the drink will be smaller and finer which makes it easier to drink.



#### Express Cool Mode



Flexi Room, also chills your daily food items quickly to its right temperature preserving its freshness.

## Manual Temperature Settings

You may also manually set the Flexi Room's temperature to a permanent temperature setting. Choose and set either Deep Freezing, Soft Freezing, Chill or Cool as your permanent temperature setting.

4 Different Temperature Settings

#### DEEP FREEZING -18°C



Suitable to preserve food freshness longer.

#### SOFT FREEZING -8°C



Chills and maintains soft food texture from deep freezing.

#### CHILL 0°C



Ideal for preserving daily food freshness.

#### COOL 3°C



Perfect to chill food that is to be served shortly.





## Touch Control Panel

### Control Settings At A Touch Of Your Finger

The sophisticated touch control panel, allows you to adjust the temperature settings and switch modes according to your preference. You are able to select the size of your ice cubes from either big or small. It also allows you to select the ice tray self-cleaning mode from outside, all without opening the refrigerator's door.

Designed to minimise door opening, prevents temperature fluctuation and preserves your food freshness.

#### Main Modes



Energy Saving



Vacation Mode



Express Freezing



Plasmacluster



Ice Making



Ice Tray Cleaning

#### Multi Temperature Room Assisting Modes



Express Cool



Extra Cool



Defrost



Cool Down

#### Additional Settings



Water Dispenser Lock

< Only for SJ-F886WG >



Door Alarm Off



Sound Off



Control Panel Lock

## “Karakuri” Water Dispenser

### A Hidden Luxury In Your Refrigerator



The word “Karakuri” means hidden in Japanese.

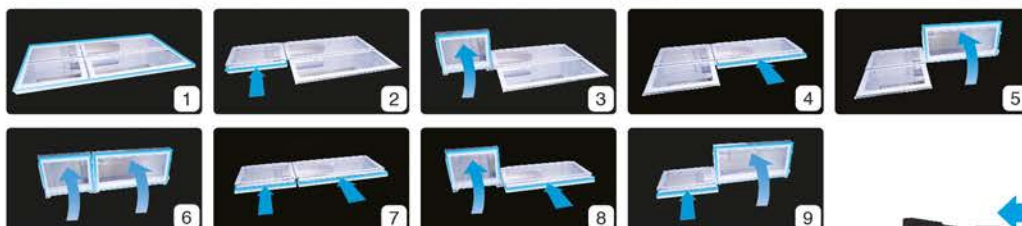
“Karakuri” water dispenser is a concealed compartment located on the refrigerator's door, keeping it free from dust and insects which holds up to 4 litres of water.



## Innovative Features

### 9-Way Flexible Shelf

9-Way shelf gives you the complete flexibility to store almost any size of food items without a fuss.



### Pillarless Design

#### There's Always A Place For Your Big Items

This unique Hikaru Refrigerator lets you store bigger or wider items easily in its huge, non-compartmentalised center pillarless fridge section.



### Vegetable Case

#### Bigger And Organised Compartment

Covered vegetable drawer case, locks in the freshness of your high-moisture food items like vegetables and fruits. Its spacious compartment also helps in keeping your food items conveniently.



### Auto Ice Cube Maker

#### Hassle Free Ice Cube

This technology offers hassle-free ice making process where you just need to fill up water in the water tank, choose the size of your ice cubes from either big or small and the refrigerator makes the ice cubes for you automatically!



### Diversified Freezer Compartments

#### A Right Storage For All Your Frozen Needs

Store your frozen food conveniently with Sharp Hikaru's small and big freezer compartments. These two different sized freezer compartments, allow you to select and store your frozen items according to their sizes.





**SJF886WGK (Mirror Black)**

**780 Litres**

Glass Door Finish



**J-TECH INVERTER**

**ActiFresh HYBRID**



- J-Tech Inverter Technology
- Plasmacluster Ion Technology
- ActiFresh Hybrid Cooling Technology
- Flexi Room
- Touch Control Door Panel
- "Karakuri" Water Dispenser
- 9-Way Flexible Shelf
- Auto Ice Maker
- Dimension (mm):  
W908 x H1850 x D796





Elegant Designs For The Ultimate Freshness

**SJF876GK (Mirror Black)**

**800 Litres**

Glass Door Finish



**J-TECH INVERTER**

**ActiFresh HYBRID**



- J-Tech Inverter Technology
- Plasmacluster Ion Technology
- ActiFresh Hybrid Cooling Technology
- Flexi Room
- Touch Control Door Panel
- 9-Way Flexible Shelf
- Auto Ice Maker
- Dimension (mm):  
W908 x H1850 x D796







Elegant Design...  
Generous Space



## CONTEMPORARY FEATURES



Intelligent Mode  
Indicator



Touch Control  
Door Panel



Auto  
Crystal CLEAR  
Ice Cube Maker

**PILLARLESS**  
DESIGN

**4 DOOR**  
CONVENIENCE



**J-TECH INVERTER**

**ActiFresh HYBRID**





## Innovative Features



### Intelligent Mode Indicator

Blue, Green, Orange The Intelligent Colours that Maintains Freshness



Plasmacluster Ion Mode ON



Indicates Plasmacluster Ion Mode. Keeping your food free from mold and bacteria and also maintain them fresh longer.



Eco Mode ON



Indicates Eco Mode. Energy saving feature that reduces electricity consumption by 10%.



Temperature Increase Sign ON



Indicates the temperature increase in the refrigerator. A warning sign informing you to check on it.



### Touch Control Door Panel

Control at Your Fingertips

Features Mode :



Child Lock Mode



Vacation Mode



Plasmacluster Mode



High Temperature Indicator



Express Freeze Mode



Eco Mode



Regular/Large Ice Cube Setting



Crystal Cube Selector



Ice Maker Cleaning Mode



Process Indicator



Navigation Key



Setting Selector

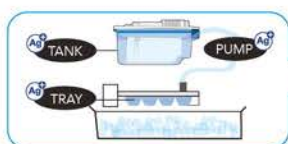


Confirm Mode

## Auto Ice Maker

### Hassle Free Ice Making Process

Fill water in the water tank and the refrigerator makes the ice cubes for you automatically!



### LED-Status of Ice Making

You can choose the type of ice cubes you want from the touch panel without opening the door. Monitor the ice making process by observing it at the touch panel.



Features indicated on this page are for model SJF104VGBK only

### Self-Cleaning System with AG+ Ion



The water tank, pump and tray are coated with AG+ Antibacterial Ions, doesn't require any maintenance. Cleaning also made easy with a touch of the Ice Maker Cleaning Mode which only takes 40 seconds.

### Four Types of Ice Cubes

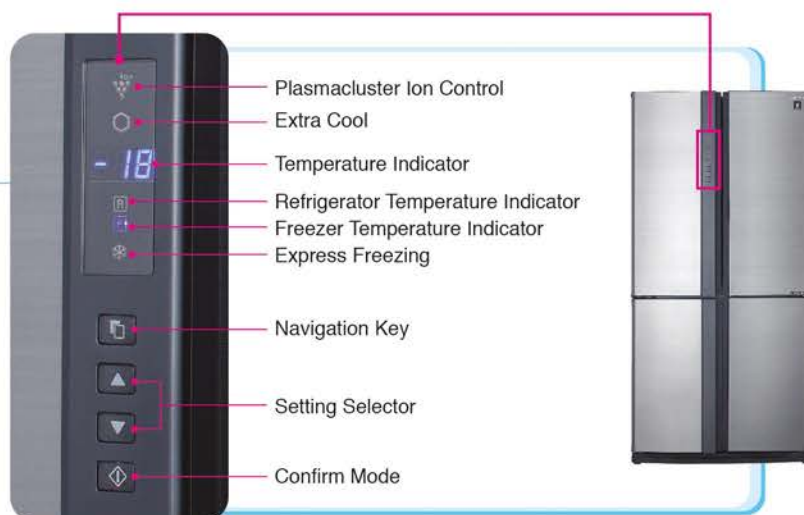
Forming crystal clear ice cubes that are all ice, with less air bubbles trapped inside them that make them look cloudy. Avance Crystal Clear Ice Cube Maker removes all the trapped air to produce solid ice cubes that are slower to melt. Your drink remains ice-cold longer.





## External Door Control Panel

Control Your Settings Without Opening Its Door



## BOTTOM FREEZER

### Less Bending And Easy Access To Fridge Compartment

You can conveniently put in and remove items from the fridge compartment without having to bend down every time.



## 4 DOOR CONVENIENCE

### Easy Access To The Preferred Compartment, Retains Food Freshness

By opening just one door, the escape of chilled air is minimised, thus retaining the freshness of the food and also saving on energy. Besides that, four doors are also light weight and easier to open compared to two doors which are much heavier.



## Express Freezing

### Makes Ice Cubes Within Minutes

Express freezing makes ice cubes for you within 93 minutes which is 40%\* faster compared to conventional models.



## LED LIGHTING

### Clear Visibility With Brighter Interior

Beautifully illuminated spacious interior, defines the elegance of the refrigerator and a clear visibility when reaching for your food.



## Extra Cool

### Savour Your Every Sip

Enjoy sipping your favourite carbonated cool drink at 0°C - 2°C. When your carbonated drink is kept in a lower temperature, the bubbles in the drink will be smaller and finer which makes it easier to drink, compared to 3°C - 5°C in conventional models.



## PILLARLESS DESIGN

### Easy Storage For Your Wide Items Up To 78cm

You can store big items easily in its huge, non-compartmentalised pillarless fridge section.

Pillarless design stores large items



## Eco Mode

### Saves Energy By Extra 10%\*

Energy saving feature that reduces electricity consumption by 10%.

\*Based on Sharp's Internal Study

**SJF104VGBK (Black)** 740 Litres

Glass Door Finish

- J-Tech Inverter Technology
- Plasmacluster Ion Technology
- Touch Control Door Panel
- Intelligent Mode Handle Indicator
- Auto Ice Maker with Self-Cleaning Mode
- ActiFresh Hybrid Cooling Technology
- Ag+ Nano Deodoriser
- Door Alarm Light Indicator
- Eco Mode
- Express Freezing Mode
- LED Lighting
- Dimension (mm):  
W892 x H1830 x D766



Ag+ NANO deodorizer

J-TECH INVERTER

ActiFresh HYBRID



**SJF959VGK (Black)**  
**SJF979VGM (Maroon)** 750 Litres

Glass Door Finish

- J-Tech Inverter Technology
- Plasmacluster Ion Technology
- External Door Control Panel
- ActiFresh Hybrid Cooling Technology
- AG CU Nano Deodoriser
- Door Alarm
- Extra Cool Mode
- Express Freezing Mode
- LED Lighting
- Dimension (mm):  
W892 x H1830 x D771



J-TECH INVERTER

ActiFresh HYBRID



**SJF95VMSS (Silver)** 750 Litres  
**SJF85VMSS (Silver)** 700 Litres  
**SJF858VMBK (Black)** 700 Litres

Metal Door Finish

- J-Tech Inverter Technology
- Plasmacluster Ion Technology
- External Door Control Panel
- ActiFresh Hybrid Cooling Technology
- AG CU Nano Deodoriser
- Door Alarm
- Extra Cool Mode
- Express Freezing Mode
- LED Lighting
- Dimension (mm):  
750L: W892 x H1830 x D771  
700L: W892 x H1720 x D771



J-TECH INVERTER

ActiFresh HYBRID







## SIDE BY SIDE

Freshness and Elegance  
Side by Side



### CONTEMPORARY FEATURES

**MULTI**  
AIR FLOW

**QUICK**  
FREEZING & COOLING

**Ag+** **NANO**  
deodorizer

**100**  
**KG**  
TEMPERED GLASS



## Innovative Features

### MULTI AIR FLOW

With cool air blown at every shelf from multiple channels provide efficient cooling at every compartment of the refrigerator.



### QUICK FREEZING & COOLING

Freezing your food fast helps prevent bacteria growth.



### Ag+ NANO deodorizer

The Filter consists of Nano-size minute molecules that oxidises and breaks down odour molecules allowing odourless air to pass through.



100  
KG

TEMPERED GLASS

Not only able to hold up 100kg the tempered glass is almost scratch proof.



### Adjustable Shelves

Position the shelves accordingly to the height of your food items. You can fit in large or small items by maximising space.



### LED Lighting

Consuming much less energy the LED Lighting adds elegant appeal with brighter interior.





# SIDE BY SIDE

Selections According To Your Preference

**SJX636GM (Black)**

**620 Litres**

Glass Mirror Door Finish

**SJX626MS (Silver)**

**620 Litres**

Metal Door Finish

Ag+ NANO deodorizer

10 YEAR WARRANTY Compressor

- Multi Air Flow
- External LED Control Panel
- Ag+ Nano Deodoriser
- Tempered Glass Shelves
- LED Lighting
- Quick Cooling
- Quick Freezing
- Door Alarm
- Dimension(mm)  
W900 x H1780 x D700



# SIDE BY SIDE

Selections According To Your Preference

**SJX518GK (Black)**

**500 Litres**

Glass Door Finish

**SJX508MS (Silver)**

**500 Litres**

Metal Door Finish

Ag+ NANO deodorizer

10 YEAR WARRANTY  
Compressor

- Multi Air Flow
- External LED Control Panel
- Ag+ Nano Deodoriser
- Tempered Glass Shelves
- LED Lighting
- Quick Cooling
- Quick Freezing
- Door Alarm
- Dimension(mm)  
W900 x H1770 x D590







# PELICAN

Mega Freezer...  
Mega Storage



## CONTEMPORARY FEATURES



Mega Size  
Freezer  
Compartment



Freezer  
Organiser



Movable Type  
Ice Maker



Innovative  
In-Door  
Ice Maker



Touch Control  
Door Panel



**J-TECH** INVERTER

**HYBRID**  
COOLING SYSTEM





## Innovative And Space Saving

### Bigger Size Freezer Compartment Up to 28 Litres\*

Keep your family well stocked on frozen food with the new Sharp Pelican Mega Freezer refrigerator range with a massive freezer compartment that's up to 28 litres\* bigger.

Up To  
**28** LITRES  
FREEZER SIZE



 = 1 Litre



28 Boxes



\* As Compared to Previous Model.

### Get Organised with Freezer Organiser

A special freezer organizer compartment allows easy storage and ready access to small food items. Keeping them fresh, it prevents transfer of odour and contamination with food in the main section of the freezer while preserving hygiene.



### Innovative In-Door Ice Maker\*\*

One of the space saving options the new Mega Freezer offers is the revolutionary design whereby the icemaker is placed on the door. Just pour water into the ice tray, twist tray when ice is ready and remove ice when required.

\*\* For SJF88MF & SJP80MF Only.



In-Door Ice Maker



Just Add Water



Open Drawer for Ice

### Movable Type Ice Maker - Space Saving and Flexible

Multiple Ways to Customise Your Ice Maker



01



02



03



04



05



## Beauty And Convenience

### Exquisitely Designed Handle\*\*

The exquisitely stainless steel handle that give the pleasure not only to the sense of sight, but to the sense of touch as well.



### Glass Finish

Mega Series refrigerator smooth reflective glass finish adds a touch of style and finesse complimenting your modern lifestyle.



Gradient Maroon



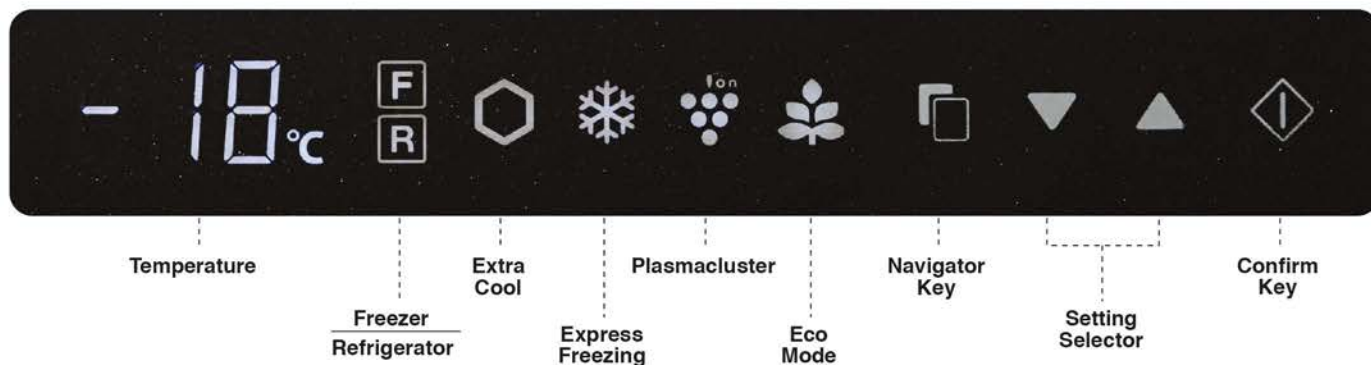
Black Starry Night



### Touch Control Door Panel\*\*

The elegantly designed and user-friendly touch control door panel allows you to control key settings without opening the refrigerator door.

\*\* Selected Models Only.



### 3 in 1 Shelf Compartment

#### 2-WAY FRESH ROOM



1 Chiller Room (Approx. 2°C - 3°C)



2 Normal Shelf (Approx. 2°C - 6°C)

#### EXTRA COOL



3 Extra Cool Room (Approx. 0°C - 2°C)

A unique convertible shelf, works as a Fresh Room for your selected food items or you also can convert it to an ordinary shelf by just pushing in the frame cover.

The special compartment chills your carbonated drinks at 0°C in the fastest period of time. The bubble in your drink will be smaller and finer making it easier to drink.



## Practical Innovations

### Tempered Glass Shelves

Tray shelves made of durable tempered glass able to withstand heavy food items. Scratch resistant and easy to clean.



Freezer Compartment



Fridge Compartment

### LED Light

Both the refrigerator and freezer<sup>^</sup> compartments are illuminated with highly sophisticated LED lighting. The luminous lights define the interior and stage a high-end feel for your kitchen.

<sup>^</sup> SJP88MFG, SJP80MFM, SJP78MFG, SJP70MFM.



### Adjustable Glass Shelves

Shelves can be placed on any of 6 different levels in the fridge compartment and 2 levels in the freezer compartment to offer the convenience of adjusting height depending on the food items that need to be stored in the fridge.

#### 6 Levels Adjustable Shelves



Fridge Compartment

#### 2 Levels Adjustable Shelves



Freezer Compartment

### Large Vegetable Case

A large enough vegetable case gives you sufficient room to store all your vegetables and fruits.



### Large Door Pocket

Large door pockets strong enough to hold up to 2.8L# bottles.



# Depending on Shape of Bottle.



**SJP88MFGM** (Gradient Maroon)  
**SJP88MFGK** (Black Starry Night)

720 Litres

Glass Door Series

- J-Tech Inverter Technology
- Plasmacluster Ion Technology
- Hybrid Cooling System
- External Touch Control Panel
- Extra Cool
- Express Freezing
- Door Alarm
- In-Door Ice Maker
- Freezer Organiser
- 2-Way Fresh Room
- Large Vegetable Case
- Dimension(mm)  
W865 x H1870 x D740



**J-TECH INVERTER**

**HYBRID COOLING SYSTEM**



**SJP78MFGK** (Black Starry Night)  
**SJP68MFGK** (Black Starry Night)

670 Litres

610 Litres

Glass Door Series

- J-Tech Inverter Technology
- Plasmacluster Ion Technology
- Hybrid Cooling System
- External Touch Control Panel
- Extra Cool
- Express Freezing
- Door Alarm
- Movable Ice Maker
- Freezer Organiser
- 2-Way Fresh Room
- Large Vegetable Case
- Dimension(mm)  
670L: W820 x H1870 x D740  
610L: W820 x H1770 x D740



**J-TECH INVERTER**

**HYBRID COOLING SYSTEM**



**SJP80MFMK (Black)**  
**SJP80MFMS (Silver)**

720 Litres

Metal Door Series

- J-Tech Inverter Technology
- Plasmacluster Ion Technology
- Hybrid Cooling System
- External Control Panel
- Extra Cool
- Express Freezing
- Door Alarm
- In-Door Ice Maker
- Freezer Organiser
- 2-Way Fresh Room
- Large Vegetable Case
- Dimension(mm)  
W865 x H1870 x D740



**J-TECH INVERTER**

**HYBRID**  
COOLING SYSTEM



**SJP70MFMK (Black)**  
**SJP60MFMK (Black)**

670 Litres

610 Litres

Metal Door Series

- J-Tech Inverter Technology
- Plasmacluster Ion Technology
- Hybrid Cooling System
- External Control Panel
- Extra Cool
- Express Freezing
- Door Alarm
- Movable Ice Maker
- Freezer Organiser
- 2-Way Fresh Room
- Large Vegetable Case
- Dimension(mm)  
670L: W820 x H1870 x D740  
610L: W820 x H1770 x D740



**SJP60MFMS (Silver)**

610 Litres

Metal Door Series



**J-TECH INVERTER**

**HYBRID**  
COOLING SYSTEM





**SJP59MS** (Silver)  
**SJP55MK** (Black)

550 Litres

Metal Door Series

- J-Tech Inverter Technology
- Plasmacluster Ion Technology
- Hybrid Cooling System
- Extra Cool
- Express Freezing
- Door Alarm
- In-Door Ice Maker
- 2-Way Fresh Room
- Dimension(mm)  
W700 x H1770 x D720



**J-TECH INVERTER**

**HYBRID**  
COOLING SYSTEM



**SJP50MS** (Silver)

500 Litres

Metal Door Series

- J-Tech Inverter Technology
- Plasmacluster Ion Technology
- Hybrid Cooling System
- Extra Cool
- Express Freezing
- Door Alarm
- In-Door Ice Maker
- 2-Way Fresh Room
- Dimension(mm)  
W700 x H1670 x D720



**J-TECH INVERTER**

**HYBRID**  
COOLING SYSTEM



**SJP598GM** (Gradient Maroon)  
**SJP598GK** (Black Starry Night)  
**SJP498GK** (Black Starry Night)

480 Litres

440 Litres

Glass Door Series

- J-Tech Inverter Technology
- Plasmacluster Ion Technology
- Hybrid Cooling System
- In-Door Control Panel
- AG CU Nano Deodoriser
- Extra Cool
- Express Freezing
- Door Alarm
- Movable Ice Maker
- Dimension(mm)  
480L: W645 x H1772 x D685  
440L: W645 x H1672 x D685



**J-TECH INVERTER**

**HYBRID COOLING SYSTEM**



**SJE538MK** (Black)  
**SJE438MK** (Black)

480 Litres

440 Litres

Metal Door Series

- J-Tech Inverter Technology
- Hybrid Cooling System
- In-Door Control Panel
- AG CU Nano Deodoriser
- Extra Cool
- Express Freezing
- Door Alarm
- Movable Ice Maker
- Dimension(mm)  
480L: W645 x H1772 x D685  
440L: W645 x H1672 x D685

**SJE538MS** (Silver)  
**SJE438MS** (Silver)

480 Litres

440 Litres

Metal Door Series



**J-TECH INVERTER**

**HYBRID COOLING SYSTEM**

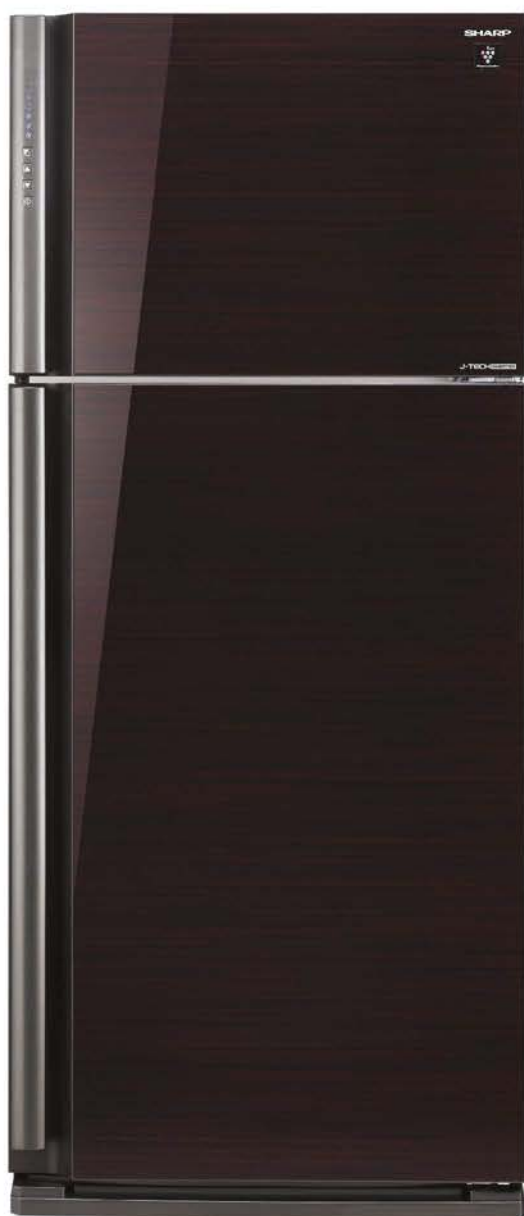






i-kagami

Features That Adds  
Freshness And Convenience  
To Your Refrigerator



## CONTEMPORARY FEATURES



External  
Door  
Control Panel



Extra Cool



Express  
Freezing



Smooth  
Access Shelf

J-TECH INVERTER



ActiFresh HYBRID





## Innovative Features

### External Door Control Panel

#### Control Your Settings Without Opening Its Door

Innovative control panel, positioned elegantly on the door handle allowing you to adjust temperature and other settings from outside without opening the refrigerator's door. It prevents the escape of chilled air and saves energy.



### Extra Cool

#### Savour Your Every Sip

Enjoy sipping your favourite carbonated cool drink at 0°C - 2°C. When your carbonated drink is kept in a lower temperature, the bubbles in the drink will be smaller and finer which makes it easier to drink, compared to 3°C - 5°C in conventional models.



### Express Freezing

#### Makes Ice Cubes Within Minutes



### Smooth Access Shelf\*

Slides in and out smoothly, offering you a convenient access to your food items on the shelf.



Slide-Out



Slide-In

\*Applies for model SJP735M & SJP635M only.

### Adjustable Shelves

#### A Place for Every Item



Featured Model: SJE535M

**i-kagami**

## Selections According To Your Preference

**SJP735MBK (Black)**  
**SJP635MBK (Black)**

**700 Litres**  
**650 Litres**

Metal Door Series

- J-Tech Inverter Technology
- Plasmacluster Ion Technology
- ActiFresh Hybrid Cooling Technology
- Easy Access Door Handle
- Express Freezing
- Extra Cool Compartment
- LED Lighting
- Smooth Access Shelf
- Ag+ Nano Deodoriser
- Dimension (mm):  
700L: W800 x H1850 x D735  
650L: W800 x H1750 x D735



Ag+ NANO deodorizer

J-TECH INVERTER

ActiFresh HYBRID



**SJE535MBK (Black)**

**470 Litres**

Metal Door Finish

- J-Tech Inverter Technology
- ActiFresh Hybrid Cooling Technology
- Easy Access Door Handle
- Express Freezing
- Extra Cool Compartment
- LED Lighting
- Adjustable Shelf
- Ag+ Nano Deodoriser
- Dimension (mm):  
W645 x H1772 x D697

Ag+ NANO deodorizer

J-TECH INVERTER

ActiFresh HYBRID







Smile

Crafted For Convenience  
With Spacious Interior



## CONTEMPORARY FEATURES



Quick  
Freezing



Quiet  
Operation



**LED**  
LIGHTING

**J-TECH INVERTER**





## Innovative Features

### 2 Way Freshroom



A unique convertible shelf, works as a Fresh Room for your selected food items or you also can convert it to an ordinary shelf by just folding and pushing in the frame cover.



### Quick Freezing



Comparison between Smile J-Tech Inverter and Non-Inverter Refrigerator



### Selections According To Your Preference

**SJ406MSS (Silver)**  
**SJ408MDS (Dark Grey)**  
**SJ366MSS (Silver)**

400 Litres

360 Litres

Metal Door Finish

**SJ326MSS (Silver)**  
**SJ286MSS (Silver)**  
**SJ288MDS (Dark Grey)**

320 Litres

280 Litres

Metal Door Finish



- J-Tech Inverter Technology
  - AG CU Nano Deodoriser
  - 2-Way Fresh Room
  - Extra Eco Mode
  - Twist & Serve Ice Tray
  - Egg Tray
  - Utility Door Pocket
  - Bottle Pocket
  - Vegetable Case
  - Dimension (mm)
- 400L: W610 x H1767 x D699  
 360L: W610 x H1657 x D699  
 320L: W545 x H1700 x D625  
 280L: W545 x H1560 x D625



**SJ325MSS (Silver)**  
**SJ285MSS (Silver)**

320 Litres

280 Litres

Metal Door Series



- AG CU Nano Deodoriser
  - Twist & Serve Ice Tray
  - Egg Tray
  - Utility Door Pocket
  - Bottle Pocket
  - 2-Way Fresh Room
  - Tempered Glass Shelf
  - LED Lighting
  - Vegetable Case
  - Dimension (mm):
- 320L: W545 x H1700 x D588  
 280L: W545 x H1560 x D588







**huggy**

Generous In Space  
And Features



## CONTEMPORARY FEATURES



Express  
Ice Making

**Ag+** **NANO**  
deodorizer

**LED**  
LIGHTING



## Innovative Features

### Express Ice Making with Electronic Control

Ice cubes in just 1 hour, you can savour the freshness of a cool drink any time of the day.



Filter that consist of nano-sized minute molecules that oxidises and breaks down odour molecules, allowing odourless air to pass through.



### LED LIGHTING

The sophisticated LED lighting illuminates the interior compartments of the fridge giving a very cool ambience.



# hugbo

## Selections According To Your Preference

**SJD210MD (Dark Silver)**

**SJ209MS (Silver)**

**SJ189MS (Silver)**

**190 Litres**

**170 Litres**

Metal Door Finish

- J-Tech Inverter Technology
- Express Ice Making
- Tempered Glass Shelves
- LED Lighting
- Ag+ Nano Deodoriser
- Utility Pocket
- Fresh Case
- Vegetable Case
- Dimension (mm):

190L: W535 x H1350 x D595

170L: W535 x H1275 x D595



**SJ176MSS (Silver)**

**170 Litres**

Metal Door Finish

- Express Ice Making
- Plastic Shelf
- LED Lighting
- Ag+ Nano Deodoriser
- Utility Pocket
- Fresh Case
- Vegetable Case
- Dimension (mm):

W535 x H1275 x D560







## Myfridge

Every Day Is A Fun-filled Day



### CONTEMPORARY FEATURES



Extra  
Large Freezer  
Compartment



Spacious  
Interior



## Innovative Features

### Myfridge

Selections According To Your Preference

**SJD226MSL (Silver)**

**205 Litres**

**SJD186MSL (Silver)**

**165 Litres**

Metal Door Finish

- Recessed Handle
- Extra Large Freezer Compartment
- Meat Case
- Vegetable Case
- Utility Box
- Bottle Pocket
- Dimension (mm):  
205L: W535 x H1260 x D560  
165L: W535 x H1050 x D560



### Mini Bar

Selections According To Your Preference

**SJM60MK (Black)**

**60 Litres**

**SJM60MW (White)**

Metal Door Finish

- Built-in Condenser
- Recessed Handle
- Freezer Compartment with Ice Maker
- Reversible Door Feature
- Adjustable Feet
- Dimension (mm):  
W449 x H501 x D470







## CHEST FREEZER

Spacious Freezer  
For All Your Frozen Needs

### CONTEMPORARY FEATURES



Wide  
Voltage Range  
(160V-260V)



Dual Switch  
Setting



Express  
Freezing



LED  
Lighting





## Innovative Features



### Wide Voltage Range (160V-260V)

A wide voltage range the first of its kind provides uninterrupted operation should there be fluctuation of power supply.



### Dual Switch Setting

The dual switch setting gives you the flexibility of converting you chest freezer to either a fridge or a freezer.



### Express Freezing

Express Freezing function within the dual switch setting allows you to freeze your food faster.



### LED Lighting

The chest freezer is illuminated with luminous LED lighting which enables clear visibility when you look for your items in the freezer.



### Removable Basket Storage



Conveniently store your daily used items in the basket for easy access. You can also remove the basket whenever you want to store big items in the freezer.



### Built-in Safety Lock

Built-in safety lock allows you to lock your freezer preventing unnecessary openings, especially by children.

### White Coated Inner Steel Panel

Inner steel panel gives durability and toughness while the white coated inner panel provides easy cleaning and faster cooling.

## CHEST FREEZER

### Selections According To Your Preference

#### SJC518 (White) 510 Litres

- Wide Voltage Range (160V-260V)
- Dual Switch Setting
- Express Freezing
- LED Lighting
- Removable Basket Storage
- Built-in Safety Lock
- Grip Handle
- Dimension (mm):  
510L: W1535 x D740 x H825



#### SJC318 (White) 310 Litres

#### SJC218 (White) 220 Litres

- Wide Voltage Range (160V-260V)
- Dual Switch Setting
- Express Freezing
- LED Lighting
- Removable Basket Storage
- Built-in Safety Lock
- Grip Handle
- Dimension (mm):  
310L: W1116 x D604 x H835  
220L: W950 x D564 x H835



#### SJC178 (Grey) 160 Litres

#### SJC168 (White)

#### SJC128 (Grey)

#### SJC118 (White) 110 Litres

- Wide Voltage Range (160V-260V)
- Dual Switch Setting
- Express Freezing
- LED Lighting
- Removable Basket Storage
- Built-in Safety Lock
- Grip Handle
- Dimension (mm):  
160L: W754 x D564 x H845  
110L: W574 x D564 x H845





# Specifications

## REFRIGERATOR SERIES

| Model                               | Hikaru                     |                            | Avance     |                        |                |                         | Side By Side           |                        |                        |                        |
|-------------------------------------|----------------------------|----------------------------|------------|------------------------|----------------|-------------------------|------------------------|------------------------|------------------------|------------------------|
|                                     | SJF886WVK                  | SJF876GK                   | SJF104VGBK | SJF979VGM<br>SJF959VVK | SJF95VMSS      | SJF85VMMS<br>SJF858VMBK | SJX636GM               | SJX626MS               | SJX518GK               | SJX508MS               |
| Gross Capacity (L)                  | 780                        | 800                        | 740        | 750                    | 750            | 700                     | 620                    | 620                    | 500                    | 500                    |
| Net Capacity (L)                    |                            |                            |            |                        |                |                         |                        |                        |                        |                        |
| Total                               | 650                        | 660                        | 600        | 605                    | 605            | 556                     | 517                    | 517                    | 436                    | 436                    |
| Refrigerator                        | 423                        | 433                        | 393        | 394                    | 394            | 345                     | 345                    | 345                    | 291                    | 291                    |
| Freezer                             | 179                        | 179                        | 207        | 211                    | 211            | 211                     | 172                    | 172                    | 135                    | 135                    |
| Flexi Room                          | 48                         | 48                         |            |                        |                |                         |                        |                        |                        |                        |
| Door                                | 5                          | 5                          | 4          | 4                      | 4              | 4                       | 2                      | 2                      | 2                      | 2                      |
| Cooling System                      | Fan                        | Fan                        | Fan        | Fan                    | Fan            | Fan                     | Fan                    | Fan                    | Fan                    | Fan                    |
| Dimension (mm)                      |                            |                            |            |                        |                |                         |                        |                        |                        |                        |
| Width                               | 908                        | 908                        | 892        | 892                    | 892            | 892                     | 900                    | 900                    | 900                    | 900                    |
| Height                              | 1850                       | 1850                       | 1830       | 1830                   | 1830           | 1720                    | 1780                   | 1780                   | 1770                   | 1770                   |
| Depth                               | 796                        | 796                        | 766        | 771                    | 771            | 771                     | 700                    | 700                    | 590                    | 590                    |
| Handle                              | Recessed                   | Recessed                   | Recessed   | Recessed               | Recessed       | Recessed                | Grip                   | Grip                   | Recessed               | Recessed               |
| General Features                    |                            |                            |            |                        |                |                         |                        |                        |                        |                        |
| J-Tech Inverter Technology          | o                          | o                          | o          | o                      | o              | o                       |                        |                        |                        |                        |
| Plasmacluster Ion Technology        | o                          | o                          | o          | o                      | o              | o                       |                        |                        |                        |                        |
| ActiFresh Hybrid Cooling Technology | o                          | o                          | o          | o                      | o              | o                       |                        |                        |                        |                        |
| Ice & Water Dispenser               | Karakuri Water Dispenser   |                            |            |                        |                |                         |                        |                        |                        |                        |
| Auto Ice Maker                      | o                          | o                          | o          |                        |                |                         |                        |                        |                        |                        |
| Temperature Control                 | External                   | External                   | External   | External               | External       | External                | External               | External               | External               | External               |
| AG CU / AG+ Nano Deodoriser         | AG CU                      | AG CU                      | Ag+        | AG CU                  | AG CU          | AG CU                   | Ag+                    | Ag+                    | AG+                    | AG+                    |
| LED Control Panel                   | o (Touch)                  | o (Touch)                  | o (Touch)  | o                      | o              | o                       | o                      | o                      | o                      | o                      |
| Extra Cool                          | o                          | o                          |            | o                      | o              | o                       |                        |                        |                        |                        |
| Express Freezing                    | o                          | o                          | o          | o                      | o              | o                       | o                      | o                      | o                      | o                      |
| Child Lock                          | o                          | o                          | o          | o                      | o              | o                       | o                      | o                      |                        |                        |
| Door Alarm                          | o                          | o                          | o          | o                      | o              | o                       | o                      | o                      | o                      | o                      |
| Eco Mode                            | o                          | o                          | o          | o                      | o              | o                       | o                      | o                      | Holiday Mode           | Holiday Mode           |
| Refrigerant                         | R-600a                     | R-600a                     | R-600a     | R-600a                 | R-600a         | R-600a                  | R-600a                 | R-600a                 | R-600a                 | R-600a                 |
| Refrigerator                        |                            |                            |            |                        |                |                         |                        |                        |                        |                        |
| Egg Tray / Pocket                   | 1                          | 1                          | 1          | 1                      | 1              | 1                       | 1                      | 1                      | 1                      | 1                      |
| Utility Box / Pocket                | 3                          | 4                          | 5          | 5                      | 5              | 4                       | 2                      | 2                      | 3                      | 3                      |
| Bottle Pocket                       | 2                          | 2                          | 2          | 2                      | 2              | 2                       | 2                      | 2                      | 1                      | 1                      |
| Smooth Slide Out Shelf              |                            |                            |            |                        |                |                         |                        |                        |                        |                        |
| Shelves - Tempered Glass            | 2 (1pc 9-Way Shelf)        | 2 (1pc 9-Way Shelf)        | 2          | 2                      | 2              | 2                       | 3                      | 3                      | 3                      | 3                      |
| - Plastic                           |                            |                            |            |                        |                |                         |                        |                        |                        |                        |
| Vegetable Shelf                     | 1                          | 1                          | 1          | 1                      | 1              | 1                       | 2                      | 2                      | 2                      | 2                      |
| Vegetable & Fruit Case              | 2                          | 2                          | 2          | 1                      | 1              | 1                       | 2                      | 2                      | 2                      | 2                      |
| Fresh Room                          | 2                          | 2                          | 1          | 2 (Extra Cool)         | 2 (Extra Cool) | 2 (Extra Cool)          |                        |                        |                        |                        |
| Lighting - LED                      | o                          | o                          | o          | o                      | o              | o                       | o                      | o                      | o                      | o                      |
| - Bulb                              |                            |                            |            |                        |                |                         |                        |                        |                        |                        |
| Freezer                             |                            |                            |            |                        |                |                         |                        |                        |                        |                        |
| Mega Freezer                        |                            |                            |            |                        |                |                         |                        |                        |                        |                        |
| Freezer Organisier                  |                            |                            |            |                        |                |                         |                        |                        |                        |                        |
| Ice Maker                           | Automatic                  | Automatic                  | Automatic  | Twist Type             | Twist Type     | Twist Type              | Twist Type (Removable) | Twist Type (Removable) | Twist Type (Removable) | Twist Type (Removable) |
| Ice Box                             | 1 (Large)                  | 1 (Large)                  | 1 (Large)  | 2                      | 2              | 2                       | 1                      | 1                      | 1                      | 1                      |
| Door Pocket                         |                            |                            |            |                        |                |                         | 4                      | 4                      | 4                      | 4                      |
| Shelves                             |                            |                            |            |                        |                |                         | 3                      | 3                      | 3                      | 3                      |
| Drawer                              | 4 (2pcs Slide Out Shelves) | 4 (2pcs Slide Out Shelves) | 5          | 5                      | 5              | 5                       | 2                      | 2                      | 2                      | 2                      |
| Lighting - LED                      |                            |                            |            |                        |                |                         | o                      | o                      | o                      | o                      |
| Colours Available                   |                            |                            |            |                        |                |                         |                        |                        |                        |                        |
| Glass                               | BK-Black                   | BK-Black                   | BK-Black   | M - Maroon             |                |                         | M-Mirror               |                        | G-Black                |                        |
|                                     |                            |                            |            | K-Black                |                |                         |                        |                        |                        |                        |
| Metal                               |                            |                            |            |                        | SS-Silver      | SS-Silver               |                        | SL-Silver              |                        | S-Silver               |
|                                     |                            |                            |            |                        |                | BK-Black                |                        |                        |                        |                        |

\*Design and specifications are current as of November 2018 but subject to change without prior notice.

# Specifications

## REFRIGERATOR SERIES

| Model                               | Pelican                      |                        |                        |                              |                        |                        |            |            |                        |                        |                        |                        |
|-------------------------------------|------------------------------|------------------------|------------------------|------------------------------|------------------------|------------------------|------------|------------|------------------------|------------------------|------------------------|------------------------|
|                                     | SJP88MFGM                    | SJP78MFGK              | SJP68MFGM              | SJP80MFMK                    | SJP70MFMK              | SJP60MFMK              | SJP59MS    | SJP50MS    | SJP598GM               | SJP498GK               | SJE538MK               | SJE438MK               |
|                                     | SJP88MFGK                    |                        | SJP68MFGK              | SJP80MFMS                    |                        | SJP60MFMS              | SJP55MK    |            | SJP598GK               |                        | SJE538MS               | SJE438MS               |
| Gross Capacity (L)                  | 720                          | 670                    | 610                    | 720                          | 670                    | 610                    | 550        | 500        | 480                    | 440                    | 480                    | 440                    |
| Net Capacity (L)                    |                              |                        |                        |                              |                        |                        |            |            |                        |                        |                        |                        |
| Total                               | 600                          | 556                    | 516                    | 600                          | 556                    | 516                    | 473        | 437        | 394                    | 364                    | 394                    | 364                    |
| Refrigerator                        | 422                          | 394                    | 354                    | 422                          | 394                    | 354                    | 353        | 317        | 298                    | 268                    | 298                    | 268                    |
| Freezer                             | 178                          | 162                    | 162                    | 178                          | 162                    | 162                    | 120        | 120        | 96                     | 96                     | 96                     | 96                     |
| Flexi Room                          |                              |                        |                        |                              |                        |                        |            |            |                        |                        |                        |                        |
| Door                                | 2                            | 2                      | 2                      | 2                            | 2                      | 2                      | 2          | 2          | 2                      | 2                      | 2                      | 2                      |
| Cooling System                      | Fan                          | Fan                    | Fan                    | Fan                          | Fan                    | Fan                    | Fan        | Fan        | Fan                    | Fan                    | Fan                    | Fan                    |
| Dimension (mm)                      |                              |                        |                        |                              |                        |                        |            |            |                        |                        |                        |                        |
| Width                               | 865                          | 820                    | 820                    | 865                          | 820                    | 820                    | 700        | 700        | 645                    | 645                    | 645                    | 645                    |
| Height                              | 1870                         | 1870                   | 1770                   | 1870                         | 1870                   | 1770                   | 1770       | 1670       | 1772                   | 1672                   | 1772                   | 1672                   |
| Depth                               | 740                          | 740                    | 740                    | 740                          | 740                    | 740                    | 720        | 720        | 685                    | 685                    | 685                    | 685                    |
| Handle                              | Plated                       | Plated                 | Plated                 | Recessed                     | Recessed               | Recessed               | Grip       | Grip       | Plated                 | Plated                 | Recessed               | Recessed               |
| General Features                    |                              |                        |                        |                              |                        |                        |            |            |                        |                        |                        |                        |
| J-Tech Inverter Technology          | o                            | o                      | o                      | o                            | o                      | o                      | o          | o          | o                      | o                      | o                      | o                      |
| Plasmacluster Ion Technology        | o                            | o                      | o                      | o                            | o                      | o                      | o          | o          | o                      | o                      | o                      | o                      |
| ActiFresh Hybrid Cooling Technology | o                            | o                      | o                      | o                            | o                      | o                      | o          | o          | o                      | o                      | o                      | o                      |
| Ice & Water Dispenser               |                              |                        |                        |                              |                        |                        |            |            |                        |                        |                        |                        |
| Auto Ice Maker                      |                              |                        |                        |                              |                        |                        |            |            |                        |                        |                        |                        |
| Temperature Control                 | External                     | External               | External               | External                     | External               | External               | Internal   | Internal   | Internal               | Internal               | Internal               | Internal               |
| AG CU / AG+ Nano Deodoriser         | AG CU                        | AG CU                  | AG CU                  | AG CU                        | AG CU                  | AG CU                  | AG CU      | AGCU       | AG CU                  | AG CU                  | AG CU                  | AG CU                  |
| LED Control Panel                   | o (Touch)                    | o (Touch)              | o (Touch)              | o                            | o                      | o                      |            |            |                        |                        |                        |                        |
| Extra Cool                          | o                            | o                      | o                      | o                            | o                      | o                      | o          | o          | o                      | o                      | o                      | o                      |
| Express Freezing                    | o                            | o                      | o                      | o                            | o                      | o                      | o          | o          | o                      | o                      | o                      | o                      |
| Child Lock                          | o                            | o                      | o                      | o                            | o                      | o                      |            |            |                        |                        |                        |                        |
| Door Alarm                          | o                            | o                      | o                      | o                            | o                      | o                      |            |            | o                      | o                      | o                      | o                      |
| Eco Mode                            | o                            | o                      | o                      | o                            | o                      | o                      |            |            |                        |                        |                        |                        |
| Refrigerant                         | R-600a                       | R-600a                 | R-600a                 | R-600a                       | R-600a                 | R-600a                 | R600a      | R600a      | R-600a                 | R-600a                 | R-600a                 | R-600a                 |
| Refrigerator                        |                              |                        |                        |                              |                        |                        |            |            |                        |                        |                        |                        |
| Egg Tray / Pocket                   | 1                            | 1                      | 1                      | 1                            | 1                      | 1                      | 1          | 1          | 1                      | 1                      | 1                      | 1                      |
| Utility Box / Pocket                | 2                            | 2                      | 2                      | 2                            | 2                      | 2                      | 4          | 3          | 2                      | 2                      | 2                      | 2                      |
| Bottle Pocket                       | 1                            | 1                      | 1                      | 1                            | 1                      | 1                      | 1          | 1          | 2                      | 2                      | 2                      | 2                      |
| Smooth Slide Out Shelf              |                              |                        |                        |                              |                        |                        |            |            |                        |                        |                        |                        |
| Shelves - Tempered Glass            | 2                            | 2                      | 2                      | 2                            | 2                      | 2                      | 2          | 2          | 2                      | 2                      | 2                      | 2                      |
| - Plastic                           |                              |                        |                        |                              |                        |                        |            |            |                        |                        |                        |                        |
| Vegetable Shelf                     | 1                            | 1                      | 1                      | 1                            | 1                      | 1                      | 1          | 1          | 1                      | 1                      | 1                      | 1                      |
| Vegetable & Fruit Case              | 1                            | 1                      | 1                      | 1                            | 1                      | 1                      | 1          | 1          | 1                      | 1                      | 1                      | 1                      |
| Fresh Room                          | o (2-Way)                    | o (2-Way)              | o (2-Way)              | o (2-Way)                    | o (2-Way)              | o (2-Way)              | o          | o          | o                      | o                      | o                      | o                      |
| Lighting - LED                      | o                            | o                      | o                      | o                            | o                      | o                      | o          | o          | o                      | o                      | o                      | o                      |
| - Bulb                              |                              |                        |                        |                              |                        |                        |            |            |                        |                        |                        |                        |
| Freezer                             |                              |                        |                        |                              |                        |                        |            |            |                        |                        |                        |                        |
| Mega Freezer                        | o                            | o                      | o                      | o                            | o                      | o                      |            |            |                        |                        |                        |                        |
| Freezer Organiser                   | o                            | o                      | o                      | o                            | o                      | o                      |            |            |                        |                        |                        |                        |
| Ice Maker                           | Twist Type In-Door Ice Maker | Twist Type (Removable) | Twist Type (Removable) | Twist Type In-Door Ice Maker | Twist Type (Removable) | Twist Type (Removable) | Twist Type | Twist Type | Twist Type (Removable) | Twist Type (Removable) | Twist Type (Removable) | Twist Type (Removable) |
| Ice Box                             | 2                            | 1                      | 1                      | 2                            | 1                      | 1                      | 1          | 1          | 1                      | 1                      | 1                      | 1                      |
| Door Pocket                         | 1                            | 2                      | 2                      | 1                            | 2                      | 2                      | 2          | 2          | 2                      | 2                      | 2                      | 2                      |
| Shelves                             | 2                            | 2                      | 2                      | 2                            | 2                      | 2                      | 1          | 1          | 1                      | 1                      | 1                      | 1                      |
| Drawer                              | 1                            | 1                      | 1                      | 1                            | 1                      | 1                      |            |            |                        |                        |                        |                        |
| Lighting - LED                      | o                            | o                      | o                      | o                            | o                      | o                      |            |            |                        |                        |                        |                        |
| Colours Available                   |                              |                        |                        |                              |                        |                        |            |            |                        |                        |                        |                        |
| Glass                               | M-Maroon                     | K-Black                | M-Maroon               |                              |                        |                        |            |            | M-Maroon               | K-Black                |                        |                        |
|                                     | K-Black                      |                        | K-Black                |                              |                        |                        |            |            | K-Black                |                        |                        |                        |
| Metal                               |                              |                        |                        | K-Black                      | K-Black                | K-Black                | S - Silver | S - Silver |                        |                        | K-Black                | K-Black                |
|                                     |                              |                        |                        | S-Silver                     | S-Silver               | S-Silver               | K - Black  |            |                        |                        | S-Silver               | S-Silver               |

\*Design and specifications are current as of November 2018 but subject to change without prior notice.



| i-Kagami       |                |                | i-Smile Series       |            |            |                      | Smile Series |            | i-Huggy             |            | Huggy      | MyFridge    | Mini Bar    |                    |
|----------------|----------------|----------------|----------------------|------------|------------|----------------------|--------------|------------|---------------------|------------|------------|-------------|-------------|--------------------|
| SJP735MBK      | SJP635MBK      | SJE535MBK      | SJ408MDS<br>SJ406MSS | SJ366MSS   | SJ326MSS   | SJ288MDS<br>SJ286MSS | SJ325MSS     | SJ285MSS   | SJD210MD<br>SJ209MS | SJ189MS    | SJ176MSS   | SJD226MSL   | SJD186MSL   | SJM60MK<br>SJM60MW |
| 700            | 650            | 470            | 400                  | 360        | 320        | 280                  | 320          | 280        | 190                 | 170        | 170        | 205         | 165         | 60                 |
| 583            | 541            | 394            | 315                  | 287        | 253        | 224                  | 253          | 224        | 165                 | 150        | 150        | 183         | 144         | 45                 |
| 433            | 391            | 298            | 240                  | 212        | 193        | 164                  | 193          | 164        | 130                 | 115        | 115        | 152         | 113         | 42                 |
| 150            | 150            | 96             | 75                   | 75         | 60         | 60                   | 60           | 60         | 35                  | 35         | 35         | 31          | 31          | 3                  |
| 2              | 2              | 2              | 2                    | 2          | 2          | 2                    | 2            | 2          | 2                   | 2          | 2          | 1           | 1           | 1                  |
| Fan            | Fan            | Fan            | Fan                  | Fan        | Fan        | Fan                  | Fan          | Fan        | Fan                 | Fan        | Fan        | Direct      | Direct      | Direct             |
| 800            | 800            | 645            | 610                  | 610        | 545        | 545                  | 545          | 545        | 535                 | 535        | 535        | 535         | 535         | 449                |
| 1850           | 1750           | 1772           | 1767                 | 1657       | 1700       | 1560                 | 1700         | 1560       | 1350                | 1275       | 1275       | 1260        | 1050        | 501                |
| 735            | 735            | 697            | 669                  | 669        | 625        | 625                  | 588          | 588        | 595                 | 595        | 560        | 560         | 560         | 470                |
| Grip           | Grip           | Grip           | Recessed             | Recessed   | Recessed   | Recessed             | Recessed     | Recessed   | Groove              | Groove     | Groove     | Grip        | Grip        | Recessed           |
| o              | o              | o              | o                    | o          | o          | o                    |              |            | o                   | o          |            |             |             |                    |
| o              | o              |                |                      |            |            |                      |              |            |                     |            |            |             |             |                    |
| o              | o              | o              |                      |            |            |                      |              |            |                     |            |            |             |             |                    |
| Internal       | Internal       | Internal       | Internal             | Internal   | Internal   | Internal             | Internal     | Internal   | Internal            | Internal   | Internal   | Internal    | Internal    | Internal           |
| AG+ Nano       | AG+ Nano       | AG+ Nano       | AG CU                | AG CU      | AG CU      | AG CU                | AG CU        | AG CU      | AG CU               | AG CU      | AG CU      | Ag+         |             |                    |
| o              | o              | o              |                      |            |            |                      |              |            |                     |            |            |             |             |                    |
| o              | o              | o              |                      |            |            |                      |              |            | o                   | o          |            |             |             |                    |
| o              | o              | o              |                      |            |            |                      |              |            | o                   | o          |            |             |             |                    |
| R-600a         | R-600a         | R-600a         | R-600a               | R-600a     | R-600a     | R-600a               | R-134a       | R-134a     | R134a               | R134a      | R-134a     | R-134a      | R-134a      | R600a              |
| 1              | 1              | 1              | 1                    | 1          | 1          | 1                    | 1            | 1          | 1                   | 1          | 1          | o           | o           | 1                  |
| 2              | 2              | 2              | 2                    | 2          | 2          | 2                    | 2            | 2          | 1                   | 1          | 1          | 2           | 1           | 1                  |
| 1              | 1              | 1              | 1                    | 1          | 1          | 1                    | 1            | 1          | 1                   | 1          | 1          | 1           | 1           |                    |
| 1              | 1              |                |                      |            |            |                      |              |            |                     |            |            |             |             |                    |
| 2              | 1              | 2              | 2                    | 2          | 2          | 2                    | 2            | 2          | 2                   | 1          |            |             |             |                    |
| 1              | 1              | 1              | 1                    | 1          | 1          | 1                    | 1            | 1          | 1                   | 1          | 2          | 3           | 2           | 1 (Wire)           |
| 2              | 2              | 1              | 1                    | 1          | 1          | 1                    | 1            | 1          | 1                   | 1          | 1          | 1           | 1           |                    |
| 1 (Extra Cool) | 1 (Extra Cool) | 1 (Extra Cool) | 1 (2-Way)            | 1 (2-Way)  | 1 (2-Way)  | 1 (2-Way)            | 1 (2-Way)    | 1 (2-Way)  | 1                   | 1          | 1          | 1           | 1           |                    |
| o              | o              | o              | o                    | o          | o          | o                    | o            | o          | o                   | o          | o          |             |             |                    |
| Twist Type     | Twist Type     | Twist Type     | Twist Type           | Twist Type | Twist Type | Twist Type           | Twist Type   | Twist Type | Manual              | Manual     | Manual     | Manual      | Manual      |                    |
| 1              | 1              | 1              | 1                    | 1          | 1          | 1                    | 1            | 1          |                     |            |            |             |             |                    |
| 2              | 2              | 2              | 2                    | 2          | 2          | 2                    | 2            | 2          | 1                   | 1          | 1          |             |             |                    |
| 1              | 1              | 1              | 1                    | 1          | 1          | 1                    | 1            | 1          | 1                   | 1          | 1          |             |             |                    |
| MBK - Black    | MBK - Black    | MBK - Black    | SL: Silver           | SL: Silver | SL: Silver | SL: Silver           | SL: Silver   | SL: Silver | D - Dark Silver     | S - Silver | S - Silver | SL - Silver | SL - Silver | K - Black          |
|                |                |                | DS: Dark Silver      |            |            | DS: Dark Silver      |              |            | S - Silver          |            |            |             |             | W-White            |

# Specifications

## CHEST FREEZER SERIES

| Model                     |       | SJC518       | SJC318       | SJC218      | SJC168      | SJC118      |
|---------------------------|-------|--------------|--------------|-------------|-------------|-------------|
|                           |       |              |              | SJC228      | SJC178      | SJC128      |
| Voltage / Frequency       | V, Hz | 160-260      | 160-260      | 160-260     | 160-260     | 160-260     |
| Gross Capacity            | Litre | 510          | 310          | 220         | 160         | 110         |
| Defrosting                |       | Manual       | Manual       | Manual      | Manual      | Manual      |
| Control System            |       | Mechanical   | Mechanical   | Mechanical  | Mechanical  | Mechanical  |
| Wire Basket               |       | 3            | 2            | 1           | 1           | 1           |
| Lock                      |       | Yes          | Yes          | Yes         | Yes         | Yes         |
| Internal LED Door Light   |       | Yes          | Yes          | Yes         | Yes         | Yes         |
| Cooling Temperature       |       | 0 to +10     | 0 to +10     | 0 to +10    | 0 to +10    | 0 to +10    |
| Freezing Temperature      |       | -10 to -15   | -10 to -15   | -10 to -15  | -10 to -15  | -10 to -15  |
| Fast Freezing             | °C    | -18          | -18          | -18         | -18         | -18         |
| Unit Dim. *Without Handle | °C    | 1535*740*825 | 1116*604*835 | 950*564*835 | 754*564*845 | 574*564*845 |
| Handle                    | °C    | Grip Handle  | Grip Handle  | Grip Handle | Grip Handle | Grip Handle |
| Available Colours         |       | White        | White        | White       | White       | White       |
|                           |       |              |              | Grey        | Grey        | Grey        |

\*Design and specifications are current as of November 2018 but subject to change without prior notice.

**SHARP**  
my.sharp

